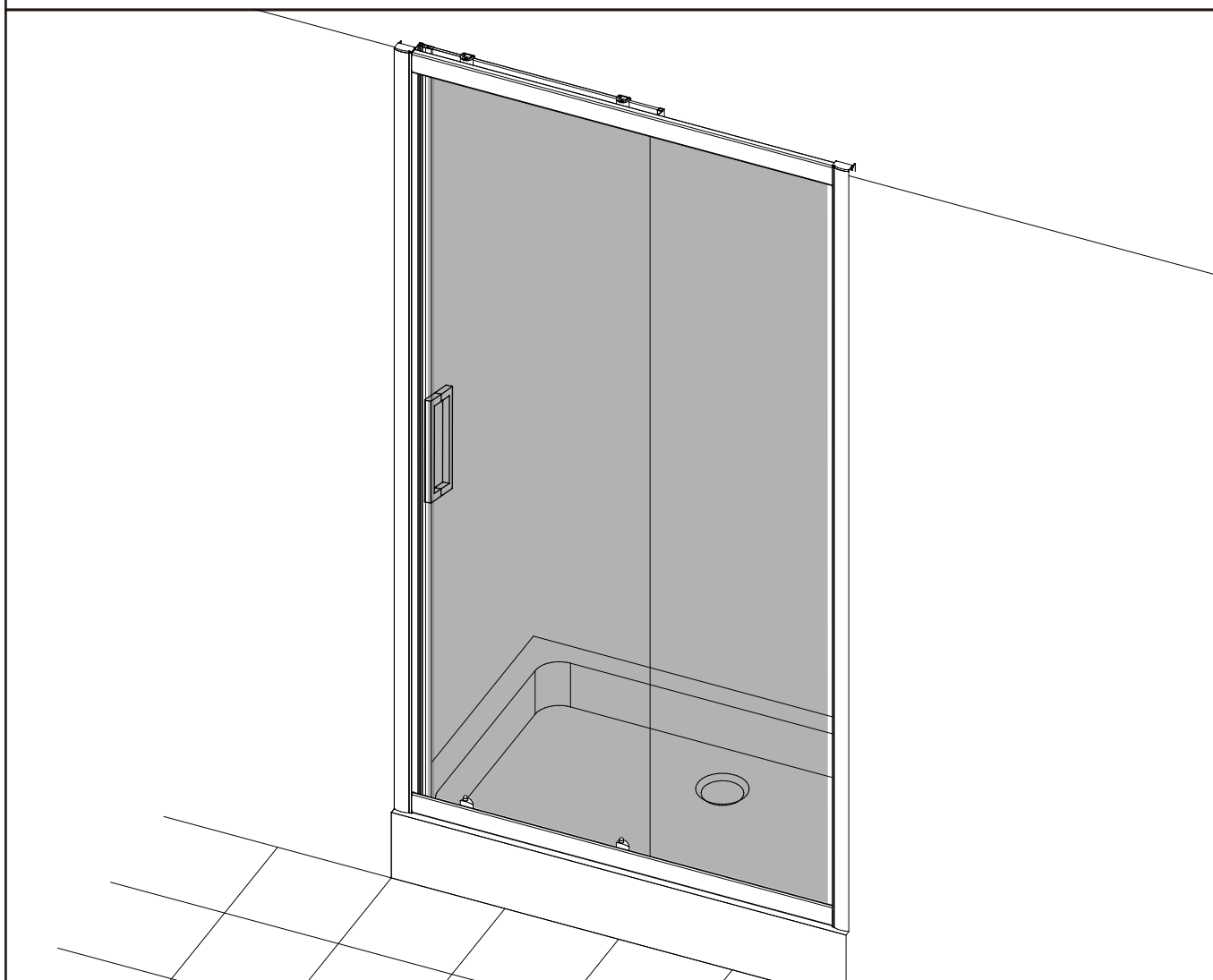
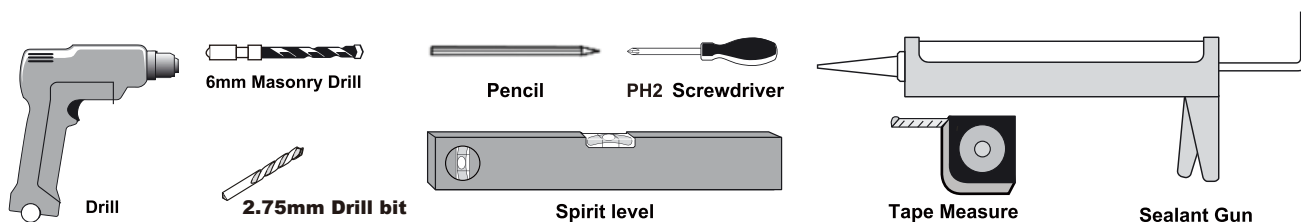


ASSEMBLY GUIDE

SLIDING DOOR

Tools Required (not supplied)



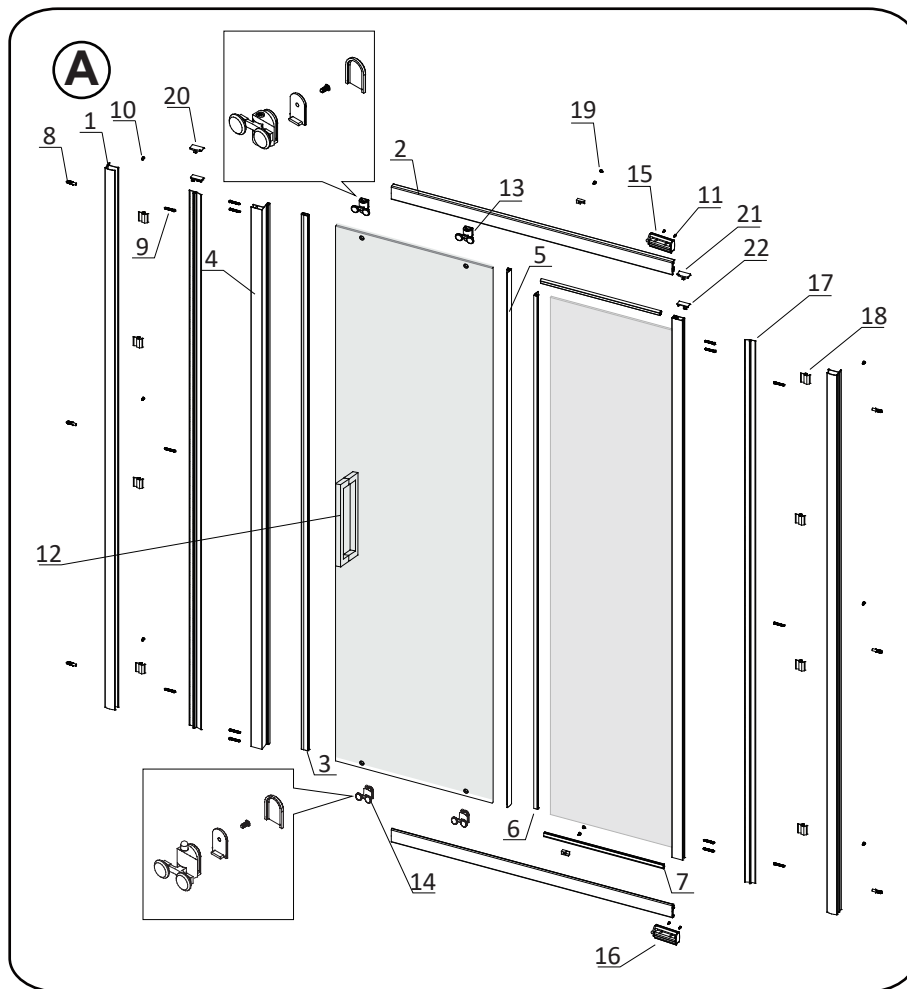
Important Safety/Assembly Instructions

This product should be installed by a suitably qualified and proficient person. The fitting instructions should be followed carefully to ensure a proper and safe installation. Failure to follow these instructions could result in future injury.

These instructions and list of parts assume that installation is done against solid/tiled walls.

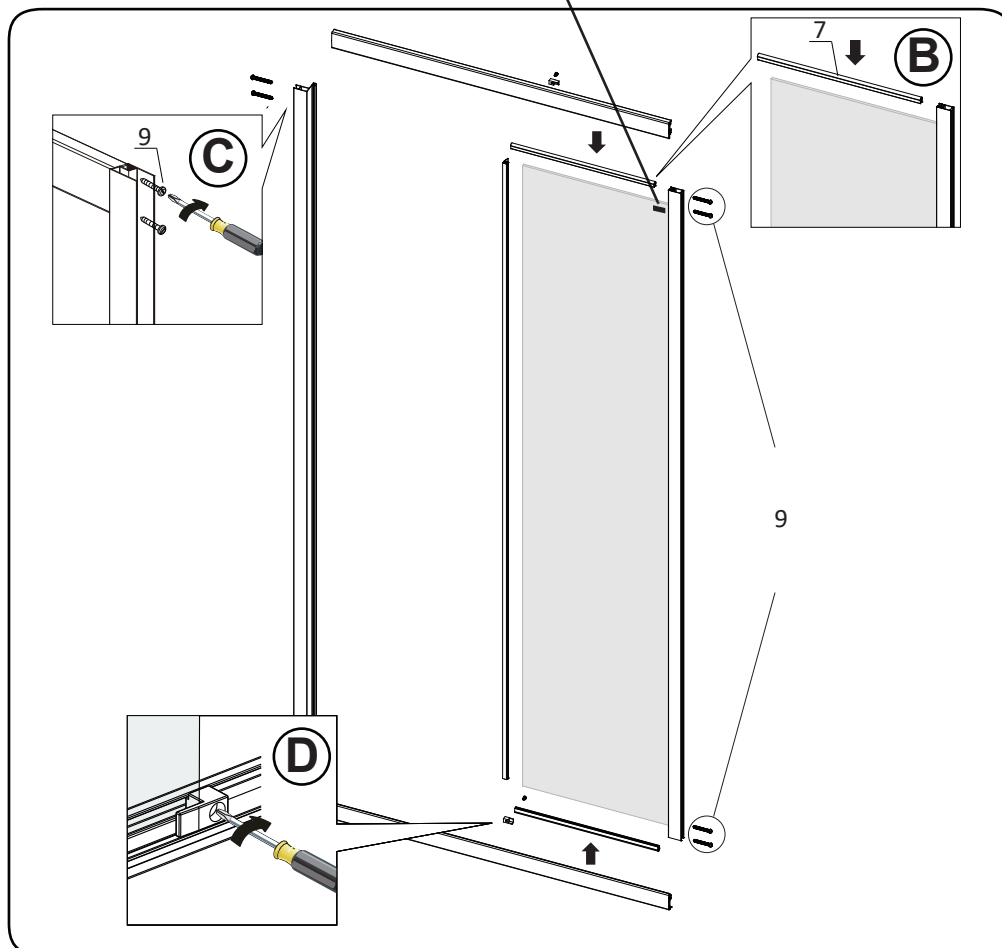
Please check this product for damage prior to starting the installation. No claims can be made after the product has been fitted.

PLEASE NOTE : The minimum and maximum adjustment sizes noted on the product brochures are based on perfectly plumb walls and trays.



Item	Description	Image	Qty
1	Wall Channel		2
2	Top and Bottom Profile		2
3	Magnetic strip		1
4	Magnetic profile		1
5	Vertical seal - 1880mm		1
6	Vertical seal - 1810mm		1
7	Gasket		2
8	Wall Plug		6
9	Screw ST3.5x30		14
10	Screw ST4x12		6
11	Screw ST3.9x6.5		4
12	Handle		1
13	Top Roller		2
14	Bottom Roller		2
15	Buffer - LH		1
16	Buffer - RH		1
17	Cover Strip		2
18	Cover Clip		10
19	Screw Cap		2
20	Standard Wall Profile Cap - LH		1
21	Standard Wall Profile Cap - RH		1
22	Upright Profile Cap		2

Note: If the glass has a glass treatment, ensure that the treated side is on the inside of the enclosure. The treated side of the glass will have a label attached to the treated side.

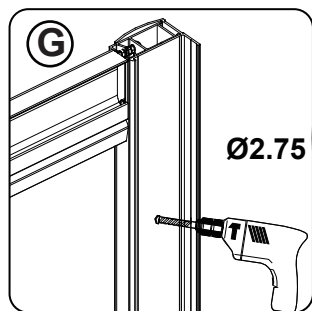
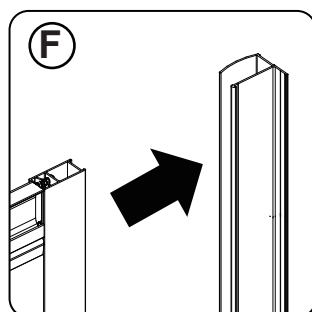
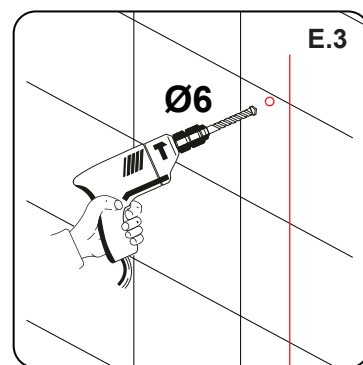
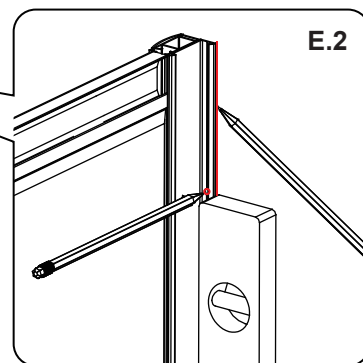
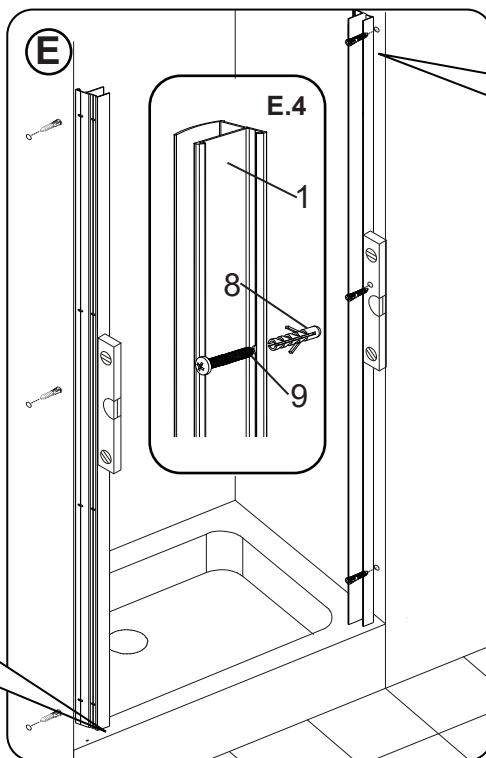
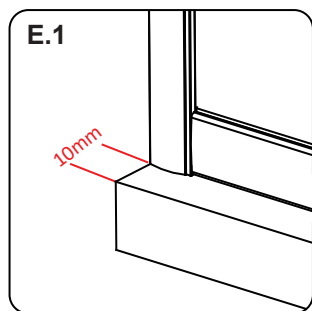


E.1 Place the wall profiles onto the tray. Ideally the profiles should be positioned 10mm from the edge of the tray as shown. Level the profiles using a spirit level.

E.2 Mark the position for fixing the wall profile using a pencil or a water soluble pen as shown.

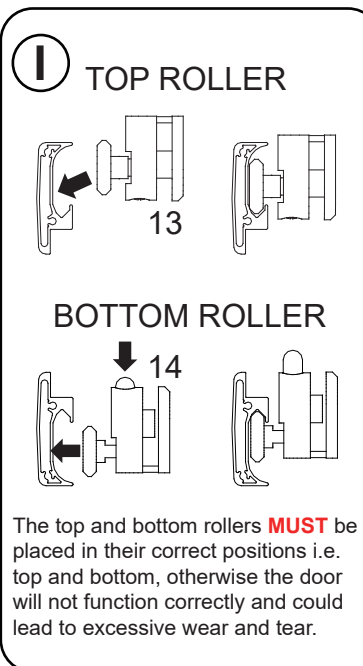
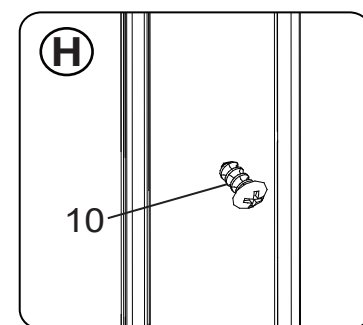
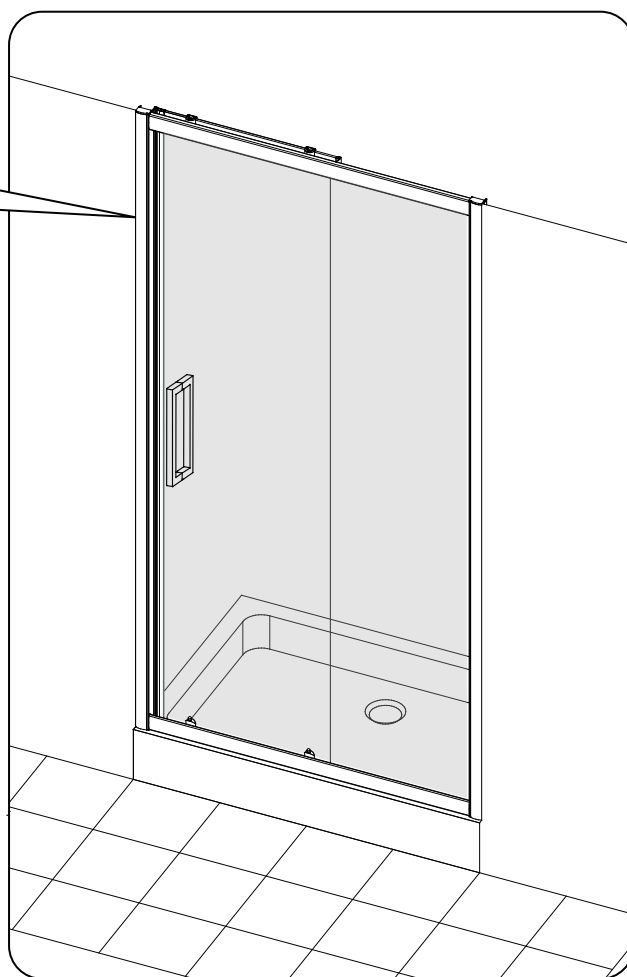
E.3 Remove the profiles then drill the holes to the wall using $\varnothing 6$ drill bit as shown.

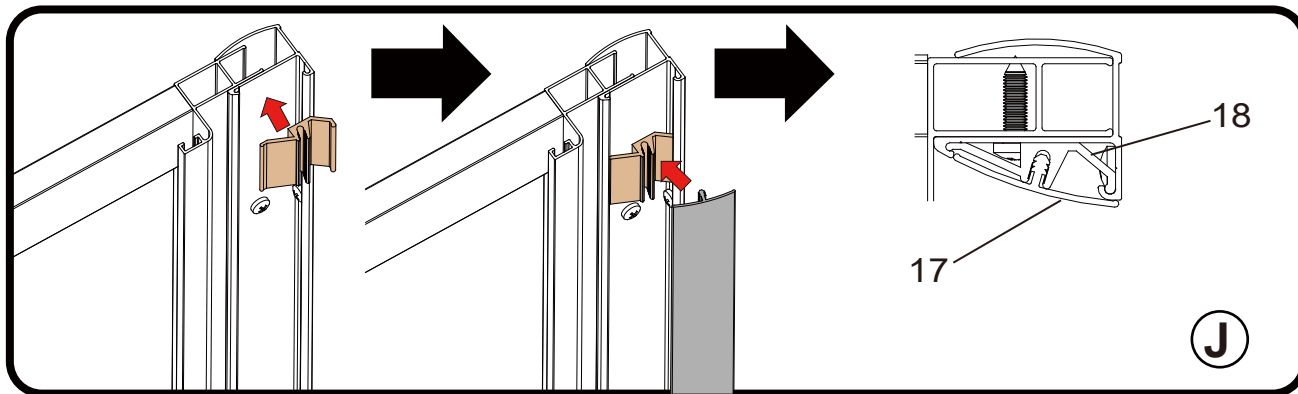
E.4 Insert the wall plugs into the wall holes. Then secure the wall profile (on the handle side) using ST3.5 x 30 screw



F Place another wall profile onto the enclosure. Insert the enclosure onto the fixed wall profile. Centralize the enclosure onto the tray top rim. Secure the wall profile onto the wall using ST3.5x30 screws.

G Carefully drill 3 fixing holes on the wall profiles through the vertical profiles using 2.75 HSS drill bit. Secure the door onto the wall profile using ST4 x 12 screws





Tips - In cold weather the seal may be more difficult to fit. In this case it is advisable to warm the seal in some warm soapy water to make it more pliable.

Applying Silicone Sealant

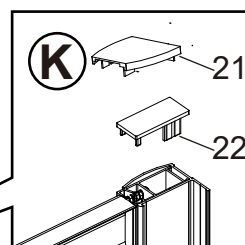
Sealing Inside

Seal from the top of the wall profile to the bottom on the **INSIDE** between the wall profile and the wall.

IMPORTANT: Do not apply sealant on inside of tray.

Sealing Outside

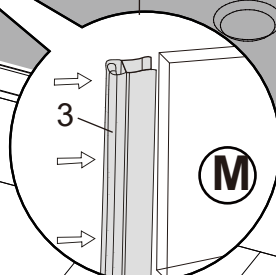
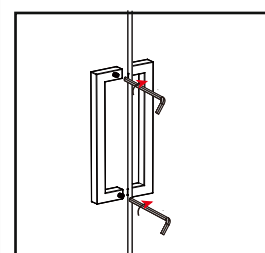
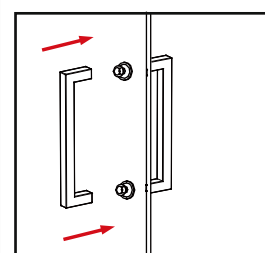
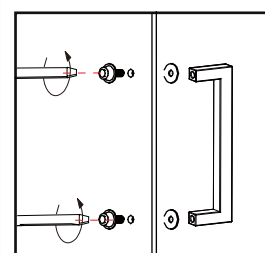
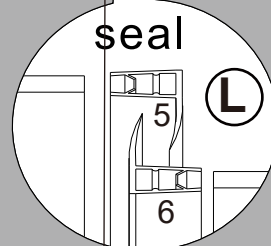
Seal only along the bottom rail and glass on the **OUTSIDE** between the profile /glass and the tray. Also up between the wall profile and the wall. Seal also the joints between the bottom profile and any upright profiles.



24 HRS



DO NOT USE THE ENCLOSURE FOR 24 HOURS AFTER SEALING



AFTERCARE

Cleaning Instructions

It is important to clean the shower enclosure after every use. Please wipe down all glass and metal parts with a clean soft cloth. Ensure that all residual water on the glass is removed after every use.

Usage

For reliable, watertight performance from the enclosure your shower head should not be positioned so that the shower sprays directly onto the enclosure door. Failure to comply with this may cause the shower to leak. Outward opening doors may cause water to drip onto the floor, please ensure that the floor covering immediately outside the enclosure will not be affected by water.



This product has been treated with easy clean glass treatment, a protective barrier which creates a 'non-stick' surface on your glass, helping to resist lime scale build up and water spots.

Aftercare

Easy clean glass can be cleaned with any suitable nonabrasive glass cleaner - with PH value of between 3-11, the coating will not be damaged. Avoid surfactants and heavily perfumed products. Vinegar and water based products are very effective. Do not use abrasive scrubbing cleaners or equipment for cleaning.